

WINCROSS®

What's New Guide

Version 12.0



Version 12.0

Copyright 1994–2012, The Analytical Group, Inc.

Editor: Coco Lauerman

All rights reserved. No part of this book may be reproduced in any form or by any electronic means, electronic or mechanical, including photocopying, scanning, recording or any information storage and retrieval system, without the express permission of The Analytical Group, Inc.

Table of Contents

IMPORTANT INFORMATION FOR CURRENT WINCROSS USERS	4
New feature highlights for Version 12.0	5
Reorganized/Consolidated Menus and Options	6
Profiles and Job Settings	7
Enhanced "Edit Banner" feature	10
Sample Balancing levels expanded	10
Redesigned "Charting" feature	11
Redesigned Frequency tables	12
Read/Write Excel 2007/2010 files	14
New Excel options in Run Tables Excel Options	15
New "Find a table" search field in Setup Tables and Run Tables	16
New "Find a banner" search field in Setup Banners and Run Tables	16
Multi-threaded processing options	16
New Calculator tool.....	16
Compatibility with SPSS 20.0	16

IMPORTANT INFORMATION FOR CURRENT WINCROSS USERS

It is very important that you read this before you start using WinCross 12.0

There are two new features in WinCross 12.0 – **Profile Settings** and **Job Settings**. These features replace **Preferences** and **Table Preset** options from previous versions of WinCross.

Here is how **Profile Settings** and **Job Settings** work:

Profile Settings contains the initial settings for your job and are used when you are creating a new job.

Job Settings initially contains the settings from the selected profile for new jobs or the settings from an old job created in a previous version of WinCross. While working on your job, changes you make to **Job Settings** affect all tables in the job file (existing or new).

You can still make changes to individual tables using **Setup|Tables** or to a group of tables using **Setup|Globally Modify Tables** as in previous versions of WinCross.

WinCross jobs created in older versions of WinCross will keep their **Job Settings**. These existing jobs will not use the **Profile Settings** feature.

New jobs created in WinCross 12.0 will require the selection of a profile first. WinCross contains a **Default Profile**. You will also have an **Active Profile** that contains settings from the last job opened prior to upgrading to WinCross 12.0.

Use **Setup|Profile Settings** to review the **Default Profile** and **Active Profile** settings and determine which profile will work for you when creating new jobs. Or, you may want to create a new profile. This can be done by making changes to the **Active Profile** or **Default Profile** settings and saving it as a new profile name. Saving new profiles will allow you to create a set of custom profiles you can use when creating new jobs.

There are two ways to create a new profile. You can use each tab of **Profile Settings** to change your settings or you can select **Import Settings from Active Job** to create a profile from the settings of an existing WinCross job file. Whenever changes are made to profile settings, WinCross will ask you to name the profile. You can replace an existing profile (with the exception of **Default Profile**) or you can create a new profile by supplying a new name.

In summary, when you start a new job in WinCross 12.0, you will be asked to select a profile. This is true even when you are using your SPSS data file to create a new job. Once a new job has been started, you would **NOT** make changes to your job using **Setup|Profile Settings**. Changes to the job file from that point on would be made using **Setup|Job Settings**, **Setup|Tables** or **Setup|Globally Modify Tables**.

Please review the **Profile Settings** feature before you start using WinCross 12.0 so that you are familiar with these settings.

For more information, please read the **Profiles and Job Settings** section on *Page 7* and the **File|New Job** topic on *Page 8*.

Using SPSS data:

The **Create job file using labels in SPSS data file** option from the **Open Data As** dialog box in previous versions of WinCross is now a main option located on the **File** menu as **New Job from SPSS file**.

The **File|New Job from SPSS file** option **DOES NOT** automatically open the SPSS data file, it simply uses the SPSS data file to create a new job file. You **MUST** open the data file using **File|Open|Open data**.

What's New in WinCross Version 12.0

WinCross 12.0 has been enhanced to include new features we hope you will find helpful and easy to understand. Menus and options have been consolidated and reorganized. Creating and editing banners has been simplified. WinCross charting has been completely redesigned and will now create charts in Microsoft® Excel, PowerPoint and Word.

New feature highlights for Version 12.0:

- Reorganized/Consolidated Menus and Options
- New Profiles and Job Settings
- Enhanced "Edit Banner" feature
- Sample Balancing levels expanded
- Redesigned "Charting" feature
- Redesigned Frequency tables
- Read/Write Excel 2007/2010 files
- New Excel options in **Run|Tables|Excel Options**
- New "Find a table" search field in **Setup|Tables** and **Run|Tables**
- New "Find a banner" search field in **Setup|Banners** and **Run|Tables**
- New Multi-threaded processing option
- New Calculator tool
- Compatibility with SPSS 20.0.

Reorganized/Consolidated Menus and Options

Many WinCross menu items and options have been consolidated into existing menu items or added to a new menu option. This consolidation helps make the WinCross setup process more centralized.

The following menu items from WinCross 11.0 have been moved, consolidated or renamed in WinCross 12.0:

- **File|Open|Open data|Create job file using labels in SPSS data file** is now **File|New Job from SPSS file**
- **File|Save|Save Report** and **File|Save|Save Report As** now allow you to save reports to Microsoft® Excel format (*.xls or *.xlsx)
- **File|Combine, sort and merge files** is now **Tools|Combine, Sort and Merge Files**
- **Edit|Go to Line** is now **Search|Go to Line**
- **Setup|Tables|Table options|Frequency** is now **Setup|Tables|Row Options|Frequency**
- **Setup|Banners|Statistical testing** is now **Setup|Banners|Edit Banner|Statistical Testing**
- The order of **Independent T-Tests** has been changed in **Setup|Banners|Edit Banner|Statistical Testing**
- The new default option for **Independent T-tests** is **Independent (based on test for equal variances)**
- **Independent Z-test** in **Setup|Banners|Edit Banner|Statistical Testing** has been split into two options, **Independent (using unpooled proportions)** and **Independent (using pooled proportions)**
- The default option for Independent Z-tests is **Independent (using unpooled proportions)**
- **Setup|Banners|Weights** is now **Setup|Banners|Edit Banner|Weights**
- **Setup|Banners|Options** is now in various locations and tabs on the new **Setup|Banners|Edit Banner** dialog box
- **Setup|XML report** has been renamed to **Setup|Enhanced Text Report Fonts and Colors**
- **Run|Memorized reports|Create report file** is now **Setup|Memorized Reports**
- **Run|Tables|Report view format option|ASCII report** is now **Run|Tables|Report viewing format|Plain text reports**
- **Run|Tables|Report view format option|XML report** is now **Run|Tables|Report viewing format|Enhanced text reports**
- **Modify** menu options are now **Setup|Globally Modify Tables**
- **Options|Font** is now **Setup|Plain Text Report Font** for ASCII reports
- **Options|Font** is now **Setup|Enhanced Text Report Fonts and Colors** for XML reports
- **Options|Font** with the job file open is now **View|Job File Font and Colors**
- **Options|Spelling** is now **Tools|Spell Checker**
- **Options|Table preset** is part of **Setup|Profile Settings**
- **Options|Page Setup** is now **File|Page Layout:Enhanced Text Reports** or **File|Page Layout:Plain Text Reports**
- **Options|Preferences** are now part of **Setup|Job Settings** or **Setup|Profile Settings**
- **Options|Preferences|Automatically deauthorize WinCross when closing** is now **Tools|Program Options|Automatically deauthorize WinCross when closing.**
- **Options|Preferences|Empty old temporary files** is now **Tools|Remove Temporary Files**
- **Options|Excel report** has been removed and new options added to **Run|Tables|Excel Options**

Profiles and Job Settings

WinCross now has the ability to create a profile of settings that can be saved and used for future jobs with similar settings. WinCross will always maintain a set of default settings that can be used by selecting *Default.pro* as the **Active profile**. This collection of default settings will always remain the same and cannot be edited; however, these default settings can serve as a baseline for new jobs and then saved as a new profile name. This might be very useful when you have a client who likes all of their WinCross reports with particular settings. Or, you can use a saved profile as the baseline for a new profile.

Note: Profiles are only used for new jobs and can be customized using **Setup|Profile Settings**. Changes made to a profile cannot be used for an existing job.

Setup|Profile Settings looks like this:

The screenshot shows the **Profile Settings** dialog box with the **Wording for Rows** tab selected. The **Table Presentation** sub-tab is active, displaying various settings for table formatting, including options for showing blank tables, centering tables, and displaying frequency and vertical/horizontal percentages. It also includes sections for banners, table rows, blank cells, and table titles. At the bottom, the **Active profile:** dropdown is set to **Active**, and there are buttons for **Save Profile As...**, **Import Settings from Active Job...**, **Remove Profile...**, **OK**, **Cancel**, and **Help**.

Each tab of the **Profile Settings** dialog box allows you to specify options pertaining to that tab. For example, the **Table Presentation** tab consists of settings that correspond to how tables will look. Most of the options on these tabs were previously located in **Options|Preferences** and/or **Options|Table preset**.

You can create a new profile using an existing (previously saved) job file by selecting the **Import Settings from Active Job** setting on the **Profile Settings** dialog box.

The profile listed in the **Active profile** list box is your active profile for creating new jobs. To select a new profile, choose the profile of your choice from the **Active profile** dropdown list.

To use a profile, select **File|New Job** or **File|New Job from SPSS File**. You will be prompted to select a profile.

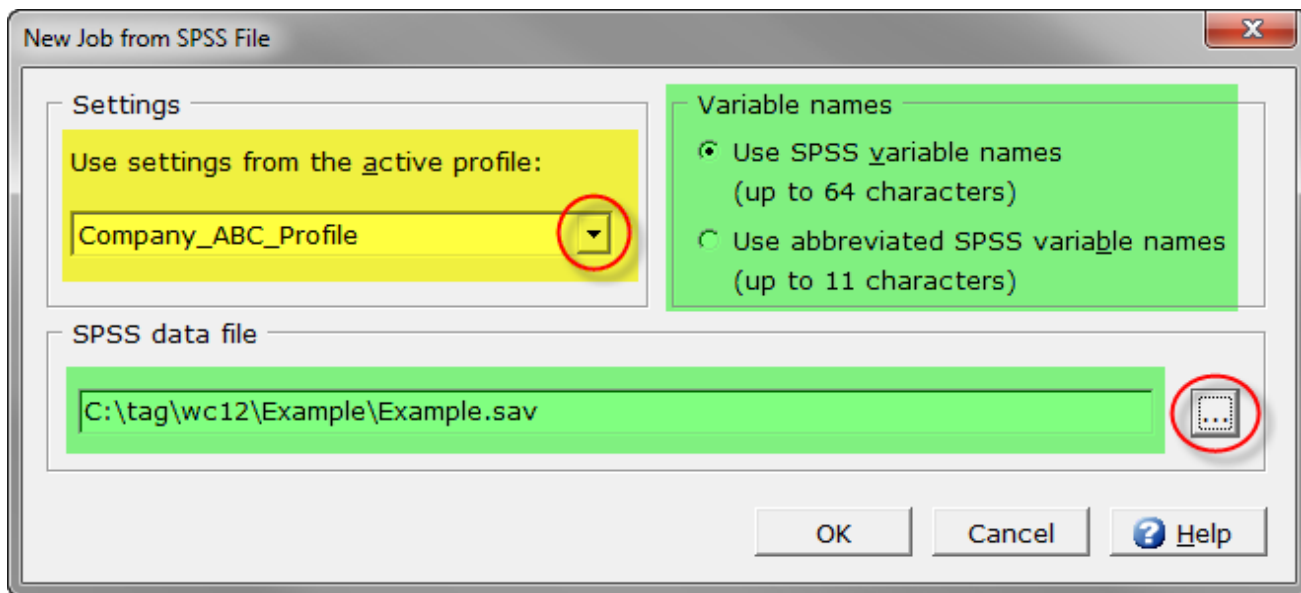
Use settings from the active profile uses the settings from the active profile for creating the new job. The active profile is listed in the box below the **Use setting from the active profile** option.

To select a new active profile for creating the job, choose a profile from the dropdown list of choices.

The following steps walk you through creating a new job using an SPSS file:

Select **File|New Job from SPSS File**. This new option differs from **File|Open|Open data|Create job file using SPSS data file** from WinCross 11.0 in that it does *NOT* open the data file, it simply creates a WinCross job file using the SPSS variable names, labels and values from the data file. You can either open your data file before or after the selection of this option.

You select a profile to be used as the initial settings for the new job:



Use settings from the active profile uses the settings from the active profile for creating the new job. The active profile is listed in the box below the **Use setting from the active profile** option.

To select a new active profile for creating the job, choose the profile from the dropdown list of choices.

Similar to the **Create job file using SPSS data file** option in WinCross 11.0; you need to select the variable name format to use for creating table row logic.

- **Use SPSS variable names** is the default and uses the variable names from the SPSS file (up to 64 characters) for table row logic when creating tables.
- **Use abbreviated SPSS variable names** uses abbreviated SPSS variable names (max 11 characters) for table row logic when creating tables. WinCross maintains uniqueness using this option.

You need to specify the location of the SPSS data file to be used for creating the new job file.

- If an SPSS data file is currently open, that file name will automatically populate the SPSS data file field. To choose a different SPSS data file, select the **Browse** button to browse to the location of the desired SPSS data file.
- If an SPSS data file is *NOT* currently open, choose the **Browse** button to browse to the location of the desired SPSS data file.
- WinCross does *NOT* open the selected data file, it simply creates a new WinCross job file using the SPSS variable names, labels and values.
- The SPSS data file can be opened before or after creating the new job file.

Once a new job is started, many of the **Profile Settings** from the profile you selected are also set in **Job Settings**. Changes you make in **Job Settings** will affect all of your tables – those that currently exist and those yet to be created for this job.

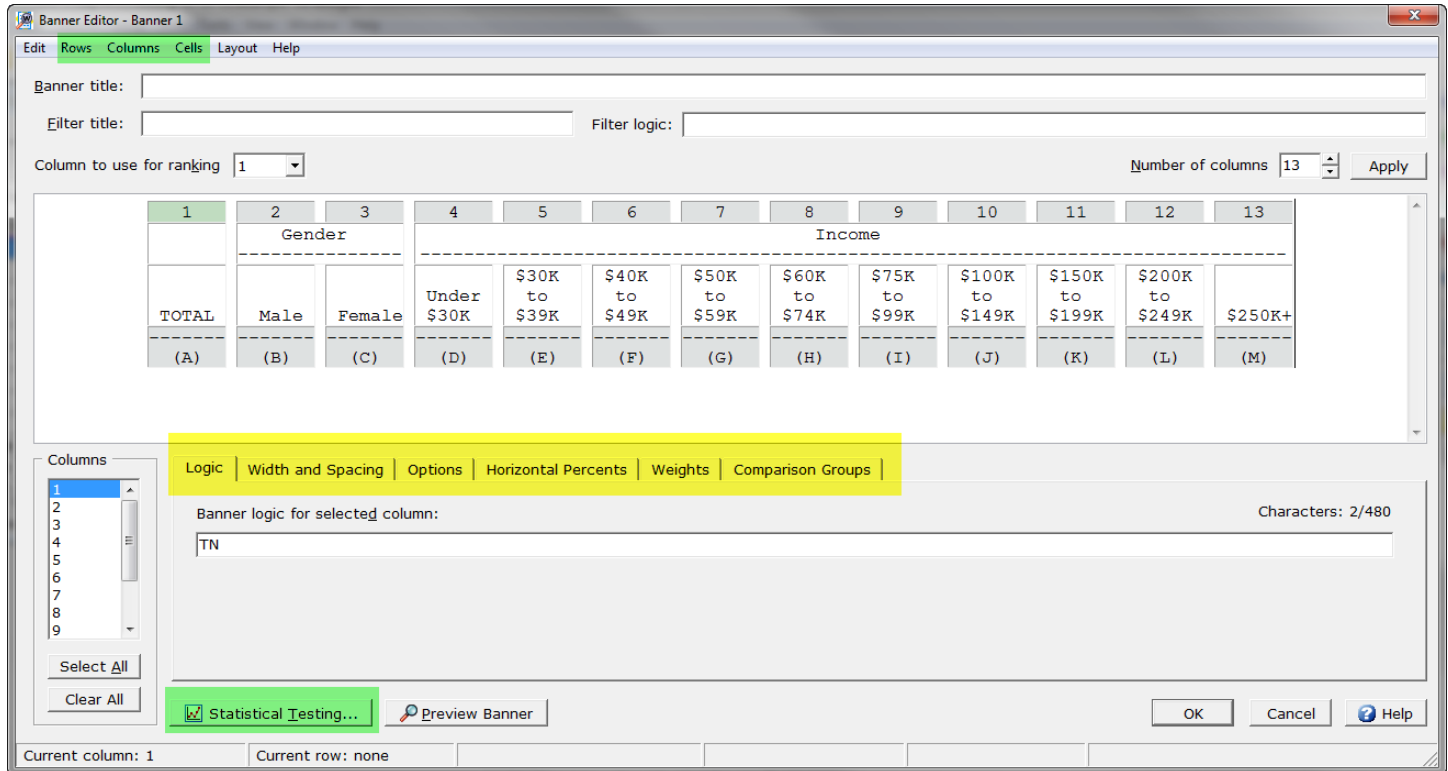
The **Setup|Globally Modify Tables** option still allows you to make changes to existing tables. **Globally Modify Tables** allows you to select one, all or a selected group of tables.

See the WinCross online **Help** topic "*File|New Job from SPSS file*" for more detailed information on using this feature.

Enhanced “Edit Banner” feature

The **Setup|Banners|Edit Banner** feature of WinCross 12.0 has a new look and a simplified process. All banner options are specified on the **Banner Editor** dialog box including statistics and comparison groups.

Setup|Banners|Edit Banner now looks like this:



Banner text can easily be added using the **Rows**, **Columns** and **Cells** menu items. Banner column options are then specified by selecting the column(s) in the **Columns** list box and using the **Logic**, **Width and Spacing**, **Options**, **Horizontal Percents**, **Weights** and **Comparison Groups** tabs.

Statistical testing is specified using the **Statistical Testing** button.

See the WinCross online **Help** topic “*Edit Banner*” for more detailed information about the new **Edit Banner** feature.

Sample Balancing levels expanded

Sample Balancing now allows 10 variables and 20 code values per variable up to a maximum of 5 million combinations.

Redesigned “Charting” feature

Creating charts in WinCross has been completely redesigned:

1. Run the tables you want to produce in chart format using **Run|Tables**.
2. Specify the Style chart options using **Setup|Chart Style**.
3. Specify the data series, data points and type of chart for each table using **Setup|Chart Content**.
4. Run your charts using **Run|Charts**.

Charts can be produced in Microsoft Excel, Microsoft PowerPoint and/or Microsoft Word format.

See the WinCross online **Help** topic “*How to create a chart in WinCross*” for a general step-by-step guide to creating charts. The “*Setup|Chart Style*”, “*Setup|Chart Content*” and “*Run|Charts*” online **Help** topics also provide more detailed information about each setting as you specify your charting options.

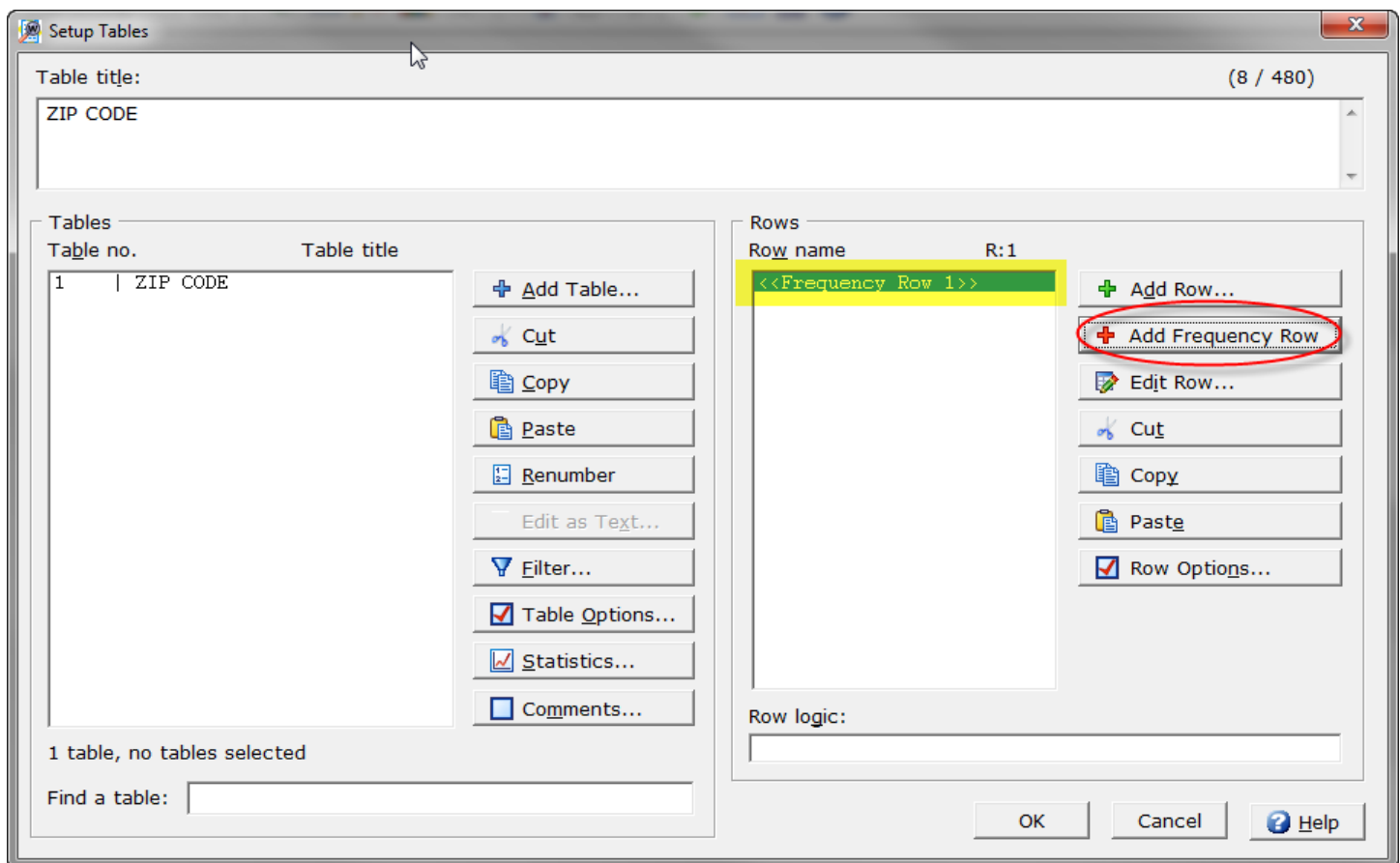
Redesigned Frequency tables

Frequency tables are now created at the row level allowing you to enter multiple frequency rows per table using the WinCross interface. **Setup|Tables|Table options|Frequency** option is now **Setup|Tables|Row Options|Frequency**. A frequency row is used for a variable having many values.

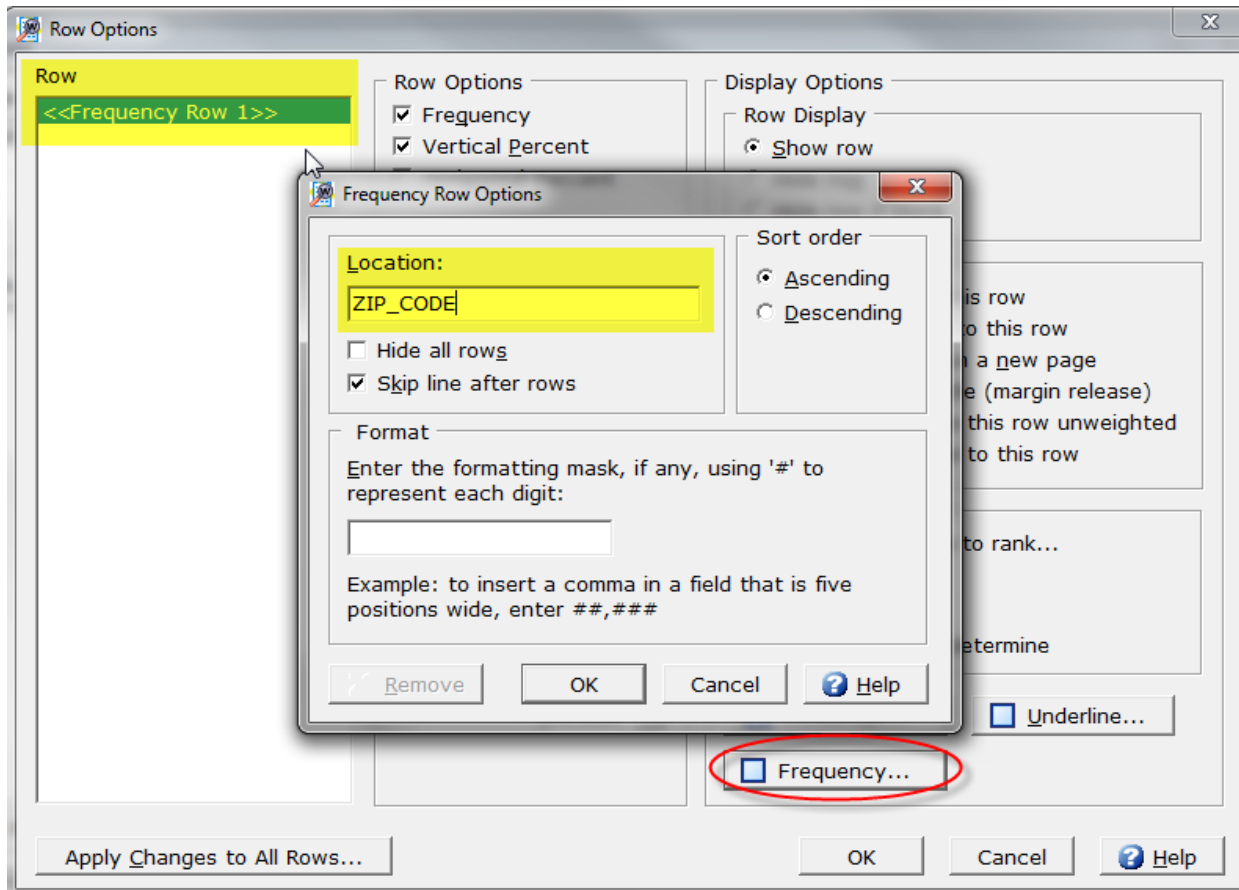
This option allows you to enter the variable name in place of row logic for each possible value. For example, you might want a table of zip codes, where each zip code is a row. WinCross will generate a row for each value using the actual values as row text. This row generation occurs when tables are processed.

Tables with frequency rows can now be used as the base table for the **Use Rows** feature in WinCross when adding new tables.

Frequency rows are now added using **Setup|Tables|Add Frequency Row**.



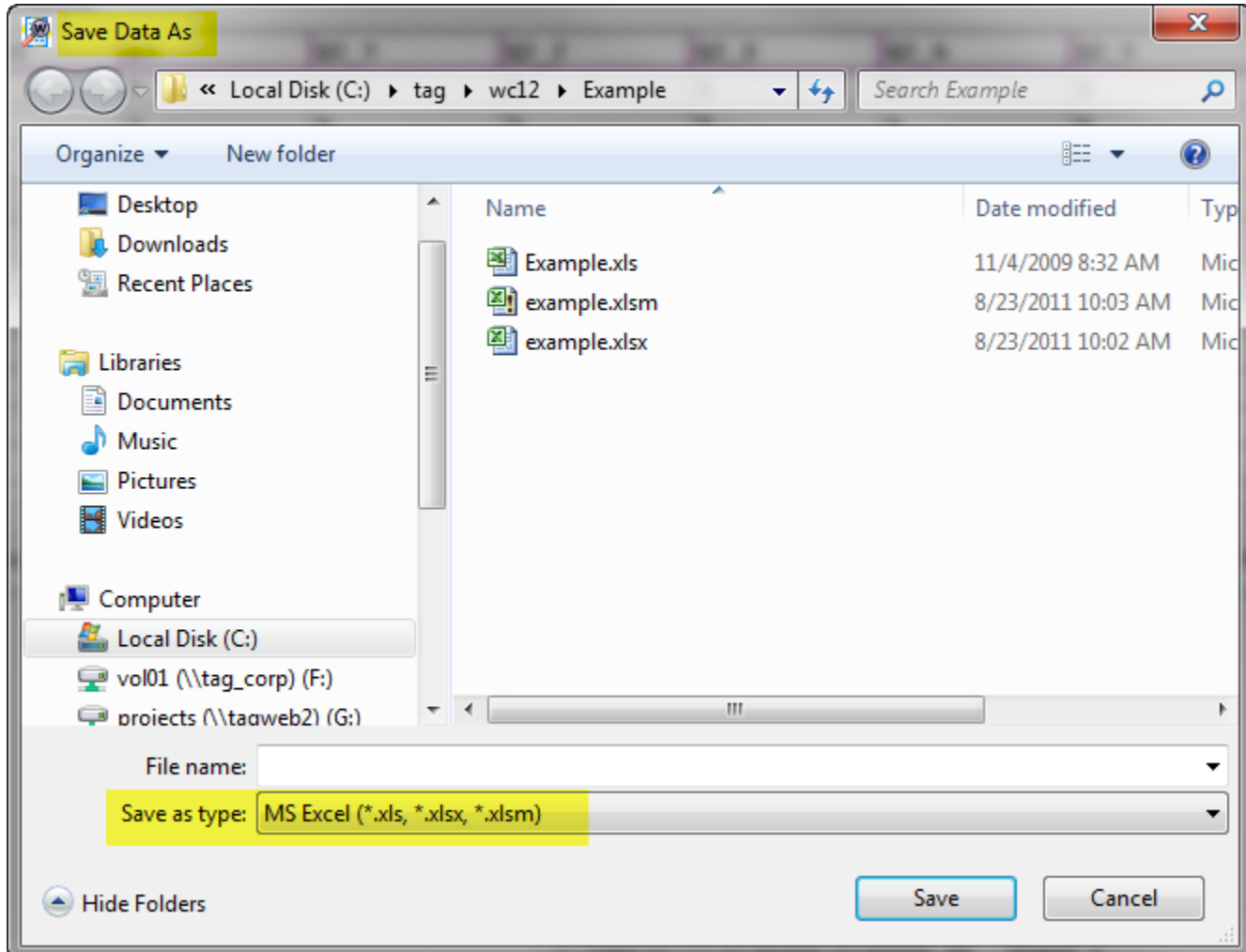
Setup|Tables|Row Options|Frequency now looks like this:



See the WinCross online **Help** topic "*Add Frequency Row*" for more information about adding frequency rows using **Setup|Tables|Add Frequency Row** and the **Setup|Tables|Row Options|Frequency** option.

Read/Write Excel 2007/2010 files

WinCross 11.0 allowed you to read Excel 2007/2010 files and now WinCross 12.0 let's you write Excel 2007/2010 files when saving data using **File|Save|Save Data As**, saving data from the Glossary, Sample Balancing or Factor Analysis and when writing tables to Excel using **Run|Tables|Excel Options**.

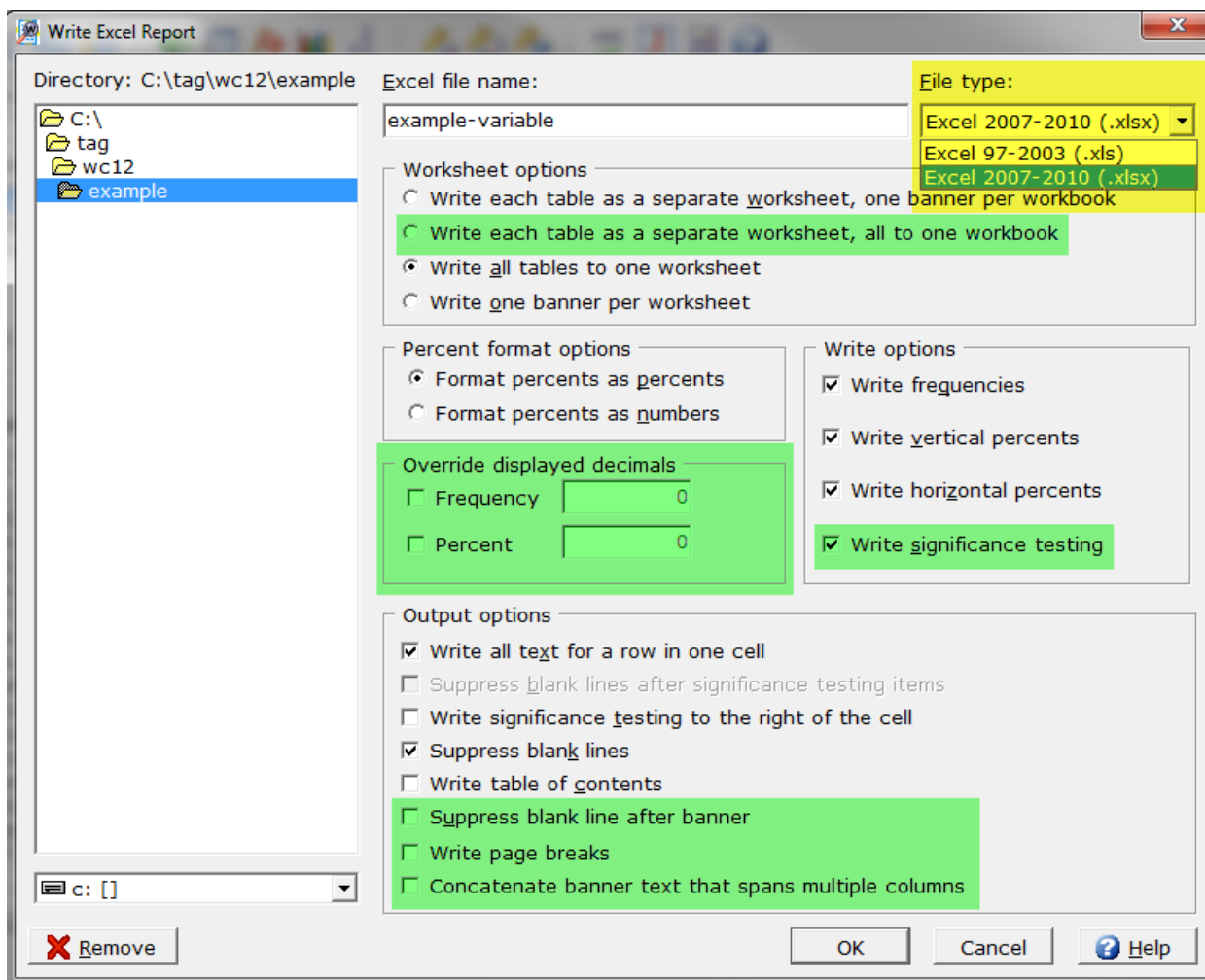


New Excel options in Run|Tables|Excel Options

New Excel options have been added to **Run|Tables|Excel Options** to help make the formatting of your Excel reports easier.

These new options include:

- The ability to **Write each table as a separate worksheet, all to one workbook**
- Decimal override feature for frequencies and percents regardless of how they appear on the WinCross tables
- A new **Write** option to specify writing significance testing to the Excel report
- **Suppress blank line after a banner**
- **Write the WinCross page breaks to the Excel report**
- **Concatenate banner text that spans multiple columns**



New “Find a table” search field in Setup|Tables and Run|Tables

Setup|Tables and **Run|Tables** now allow you to enter search criteria to locate a specific table. This is especially useful if there are many tables in your job file and you only want to select a specific table or group of tables.

New “Find a banner” search field in Setup|Banners and Run|Tables

Setup|Banners and **Run|Tables** now allow you to enter search criteria to locate a specific banner. This is especially useful if there are many banners in your job file and you only want to select a specific banner or group of banners.

Multi-threaded processing options

The **Use multiple processing threads when a multi-core CPU is present** option of **Tools|Program Options** determines whether WinCross will use its multi-threaded processing capabilities when running on a multi-core CPU. If your machine is single-core and you select this option, WinCross can only process using a single thread.

The default setting for WinCross is to always use multiple processing threads.

New Calculator tool

The new **WinCross Calculator** works just like a conventional calculator.



- Values can be entered by clicking keys with the mouse or by using the keyboard.
- The **Copy** button can be used to copy the value from the **WinCross Calculator** display to the Windows clipboard.
- The **Paste** button can be used to paste a value from the Windows clipboard to the **WinCross Calculator** display.
- The **Always on top** option displays the calculator in front of all open WinCross dialog boxes.
- **OFF** - closes the **WinCross Calculator**.

Compatibility with SPSS 20.0

WinCross 12.0 is compatible with SPSS 20.0.