

The Analytical Group, Inc. is proud to announce the release of our latest version of WinQuery.

WinQuery® 12.0 CATI/CAPI/Web Interviewing Software

New in WinQuery 12.0:

New WinQuery Main Menu Toolbar:

- WinQuery toolbar – Innovative WinQuery toolbar grouped by most commonly used tasks to interview, create, design, manage, report and publish.

New Build Questionnaire Feature:

- Insert prelists – Ability to create and reuse answer lists. Default prelists are included with WinQuery. Additionally, you may create your own answers lists that can be used for any study.

New Study Options Feature:

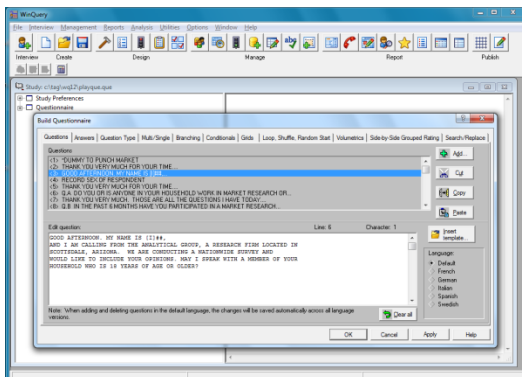
- Goal maximum/minimum interview time – Option to specify the goal maximum/minimum interview time for a study. Supervisors will be alerted to interviews that are outside the time limits.
- Alert interviewer to max time met - Select this item if you would like the background of the elapsed interview time to change to red alerting the interviewer that his interview is taking too long to complete.

New Report:

- Supervisor alerts – Report lists supervisor alerts about interviewers that have been broadcasted across all studies.

New WinQuery Calculator Feature:

- WinQuery Calculator – Easy to use basic calculator available on main menu toolbar for convenience.



Please visit us at www.AnalyticalGroup.com for more information!